

# Pat Boone

## Pat's Great Hits



ALL ORIGINAL RECORDINGS

# Pat Boone

## Pat's Great Hits

- 1. LOVE LETTERS IN THE SAND .....2:14
- 2. APRIL LOVE .....2:40
- 3. I ALMOST LOST MY MIND .....2:36
- 4. DON'T FORBID ME .....2:17
- 5. WHY BABY WHY .....1:56
- 6. REMEMBER YOU'RE MINE .....2:15
- 7. I'LL BE HOME .....2:58
- 8. MOODY RIVER .....2:36
- 9. TYING THE PIECES TOGETHER .....2:46
- 10. EVERYTHING BEGINS AND ENDS WITH YOU .....2:20

ALL ORIGINAL RECORDINGS



7 1518-77655-2 8

D2-77655 • © & © 1994 Curb Records, Inc. Manufactured and Distributed by Curb Records, Inc., 47 Music Square East, Nashville, TN 37203. Printed in the USA. Warning: All rights reserved. Unauthorized duplication is a violation of applicable laws.

**1. LOVE LETTERS IN THE SAND (2:14)**

(Nick A. Kenny/Charles F. Kenny/J. Fred Coots) Bourne Company ASCAP

**2. APRIL LOVE (2:40)**

(Paul Francis Webster/Sammy Fain) EMI Feist Catalog Inc. ASCAP

**3. I ALMOST LOST MY MIND (2:36)**

(Ivory Joe Hunter) Unichappell Music, Inc. BMI

**4. DON'T FORBID ME (2:17)**

(Charles Singleton) Elvis Presley Music BMI

**5. WHY BABY WHY (1:56)**

(George Jones/Darrell Edwards) Fort Knox Music Inc./Trio Music Co., Inc. BMI

**6. REMEMBER YOU'RE MINE (2:15)**

(Kal Mann/Bernie Lowe) Kalman Music Inc./Lowe Music Publishing Corp. ASCAP

**7. I'LL BE HOME (2:58)**

(Stan Lewis/Ferdinand Washington) Arc Music Corp. BMI

**8. MOODY RIVER (2:36)**

(Gary Bruce) Gary Bruce Music/Gil Music BMI

**9. TYING THE PIECES TOGETHER (2:46)**

(Sonny James) Mike Curb Music BMI

**10. EVERYTHING BEGINS AND ENDS WITH YOU (2:20)**

(Sonny James/Lorraine Allen) Mike Curb Music BMI

Tracks 1-8 courtesy of MCA Records, Inc.

Art Direction/Design: Neuman, Walker & Associates

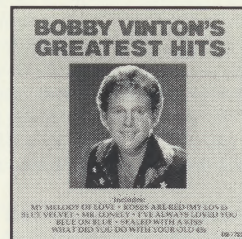
Liner Notes: Don Owens

© & © 1994 Curb Records, Inc.

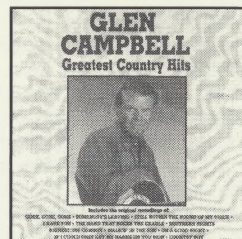
**More music on Curb for your enjoyment:**



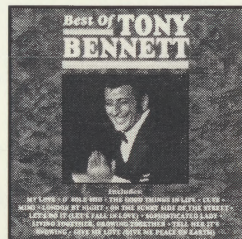
DEAN MARTIN  
All-Time Greatest Hits (D-77383)



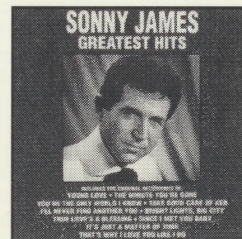
BOBBY VINTON  
Greatest Hits (D-77253)



GLEN CAMPBELL  
Greatest Country Hits (D-77362)



Best Of  
TONY BENNETT (D-77447)



SONNY JAMES  
Greatest Hits (D-77359)



D2-77655

Pat Boone's domination of the best-selling charts from 1955 to 1959 was eclipsed only by Elvis! With six #1's, and seventeen top 10 hits during that period, Pat was one of the hottest and most in-demand record acts on the concert, nightclub, and television circuits. In fact, Pat starred in three television series, "The Pat Boone Show" on ABC-TV Network (October 1957-June 1959), "The Pat Boone Show" on the NBC-TV Network (October 1966-March-1967), and the syndicated "Pat Boone In Hollywood" talk show in 1969.

Charles Eugene Boone was born on June 1, 1934 in Jacksonville, Florida, and moved to Nashville as a teenager where he would later enroll in Lipscomb College. In the early 50's, the re-named Pat Boone appeared on both the "Ted Mack Amateur Hour" and "Arthur Godfrey's Talent Scout" shows. In 1954, he was signed to a major recording contract, and he married Shirley Foley, daughter of the famed legend of country music, Red Foley. (They are about to celebrate 40 years of wedded bliss.) Over the years, Pat and Shirley became the proud parents of four lovely and talented daughters, Cherry, Linda Lee, Deborah Ann, and Laura Gene. They would later become the successful recording act, The Boone Girls. Debby went solo and became a star with her classic #1 of 1977, "You Light Up My Life." She went on to become a Broadway musical star, and still tours nationally in various musicals, occasionally making appearances with her Dad.

Pat first hit the best-selling charts in early 1955 — just one year before Elvis hit with "Heartbreak Hotel." Legend has it that at their first personal introduction, Elvis was quite nervous and tongue-tied at the thought of meeting superstar Pat Boone! Both stars became permanent fixtures on the charts for the next two decades!

In this new and special collection, some of Pat's #1 gold records are spotlighted such as "I Almost Lost My Mind" (1956), "Don't Forbid Me" (1956), "April Love" (1957), "Love Letters In The Sand" (1957), and "Moody River" (1961). His top 10 winners featured are "I'll Be Home" (1956), "Remember You're Mine" (1957), and "Why Baby Why" (1957). Two of Pat's most compelling country standouts of 1973 are also included. Country legend Sonny James wrote the ballad beauty, "Tying The Pieces Together," and co-wrote another beauty "Everything Begins and Ends With You" with Nashville's Lorraine Allen. This writer had the extreme pleasure of producing those two sides with two of my dear friends, Sonny and Pat...two of the most genuine and beautiful souls in the world.

During his stellar career, Pat Boone has starred in some fifteen movies, including three of the biggest money-making musicals of that period, *Bernardine*, *April Love*, and *Madris Gras*.

Today, Pat remains busy with personal appearances and his television program of hope and faith. In March of 1994, he will star as Will Rogers in the "Will Rogers Follies" for three months on stage at the brand new Will Rogers Theatre in Branson, Missouri.

Now it's time to sit back, relax and enjoy one of America's best-loved pop and country performers of all time, Pat Boone

# Pat Boone

## Pat's Great Hits

COMPACT  
disc  
DIGITAL AUDIO

**CURB**  
RECORDS

DZ-77655 • © & © 1994 Curb Records, Inc.  
Manufactured and Distributed by Curb Records, Inc.,  
47 Music Square East, Nashville, TN 37203. Printed in  
the USA. Warning: All rights reserved. Unauthorized  
duplication is a violation of applicable laws.

### ALL ORIGINAL RECORDINGS

1. LOVE LETTERS IN THE SAND 2:14
2. APRIL LOVE 2:40
3. I ALMOST LOST MY MIND 2:36
4. DON'T FORBID ME 2:17
5. WHY BABY WHY 1:56
6. REMEMBER YOU'RE MINE 2:15
7. I'LL BE HOME 2:58
8. MOODY RIVER 2:36
9. TYING THE PIECES TOGETHER 2:46
10. EVERYTHING BEGINS AND  
ENDS WITH YOU 2:20